

# NEWS RELEASE

## H & H Metal Source Installs 60,000# x 60" x 1/4" Slitting Line

Grand Rapids, MI – H & H Metal Source, a carbon steel distributor of cut sheets and slit coil, has recently installed a 60,000 pound X 60 inch wide X 1/4 inch thick Braner/Loopco slitting line to process cold rolled, coated and hot rolled P&O products. The new "Turret Head" slitting line is designed to slit both mild and high carbon steel up to 70,000 psi shear strength. The line complements a plant expansion project and newly constructed offices.



60,000 Pound x 60 Inch Slitting Line

**Coil Loading And Unloading:** The entry and exit coil cars are operated by hand held remote radio controls. The remote controlled cars are easier to operate than traditional pendant ones because the operator is not tethered to the equipment by a cord. They allow free access around the equipment and provide clear sight lines while loading and unloading coils.



Remote Radio Controlled Coil Car

**Two (2) Head Turret Slitter:** A quick change two (2) head turret slitter allows for tooling changes to be made off line while a master coil is being processed. The robust 9 inch arbor head is powered by a 200 horse-



Two (2) Head Turret™ Slitter

power gear train that can process 8 cuts in 1/4 inch thick material at 50,000 psi shear strength, 6 cuts in 1/4 inch thick material at 70,000 psi shear strength and up to 30 cuts in light gauge product. The precision machine is tooled with a shimless tooling package that can hold slit width tolerances of plus or minus .002 inches.



Forklift Scrap Unloading

**Crane Free Scrap Handling:** Edge trim is wound on two (2) individual scrap winders powered by two speed hydraulic motors. Level winds with programmable timers allow for compact, tightly wound bundles. Finished bundles are dumped out the bottom into an accumulation trench and pushed off line by a hydraulic ram into a hopper located on the side of the line. The hopper is staged on a hydraulic lift that elevates to floor level so it can be removed and unloaded with a forklift.

**Braner**  
USA

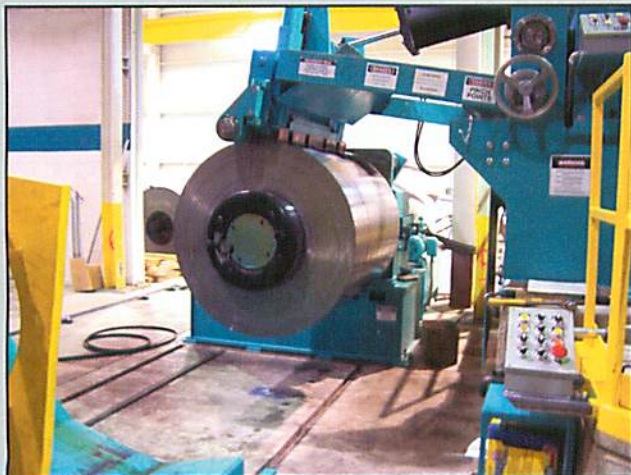
**Loopco**

**In Line Leveling:** The line is equipped with a patented "Cluster Leveler" designed specifically for coil-to-coil process lines. It is designed to remove wavy edges, center buckle, quarter buckle, cross bow and minimize burr. The Cluster Leveler has two sets of work roll clusters to precision level material ranging in thickness from .015 through .250 inches. Hardened and ground work rolls are supported by multiple back-up roll flights. All the back-up rolls are adjustable on the lower work roll bank to bend the rolls and work the strip. Unlike some levelers that rely on high line tensions to pull and stretch



*Cluster Leveler*

material, the cluster leveler does not elongate or "neck" the slit product ensuring precision slit width tolerances are held. State-of-the-art electronic controls allow full automatic roll positioning based upon entering the gauge and yield strength specifications into a data entry touch screen.



*Recoiler With Tail Hold Downs*



Braner USA, Inc., 9301 W. Bernice St., Schiller Park, IL 60176  
 Phone (847) 671-6210 Fax: (847) 671-0537  
 www.braner.com

**Recoiling:** A quick change overarm separator with an exclusive "Lateral Adjustment Feature" allows the overarm frame to move from side to side to protect material from edge damage. A 250 horsepower recoiler with a two-speed helical gear reducer can pull almost 25,000 pounds of line tension. Mult tail hold down clamps secure high carbon spring steels from clock springing on the coiler during tail out and banding.



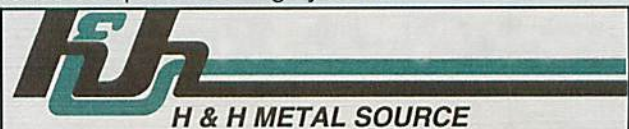
*Quick Change "No-Bolt" Filler Plates*

**2 Minute Filler Plate Changeover:** Patented "Quick Change No-Bolt" 24 inch diameter filler plates complement the 20 inch mandrel. A conventional filler plate change can take as long as 30 minutes plus valuable crane time. The "Quick Change No-Bolt" assembly is mounted on a fixture that is positioned onto the mandrel with the coil unloading car and locked into place by a single draw bolt in minutes.



*Seal-Less Strapping Head With Electronic Scale*

**Slit Coil Packaging Line:** A high speed packaging line is provided to weigh, sort and skid slit mults. It features a fully automatic operatorless traversing downender, a Signode seal-less strapping head and an electronic weigh scale conveyor tied into H & H's in house computer tracking system.



1909 Turner Ave. N.W.  
 Grand Rapids, MI 49504  
 (616) 364-0113  
 Fax (616) 364-0904

